



# USER'S MANUAL

**SMOKE ALARM**  
AC POWERED WITH STROBE LIGHT AND  
10-YEAR SEALED BATTERY BACKUP

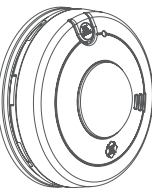
Model SM110LEDA-AC



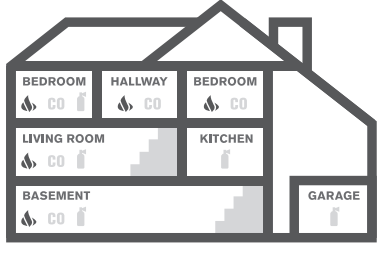
### IMPORTANT! PLEASE READ CAREFULLY AND SAVE.

The warnings/limitations card and manual contains important information about your Smoke Alarm's operation. If you are installing this Alarm for use by others, you must leave this manual—a or copy of it—with the end user.

Para el manual de usuario en español, por favor visite [firstalert.ca](http://firstalert.ca)



### RECOMMENDED PLACEMENT:



- Smoke Alarm**  
One on every level and in every bedroom
- Carbon Monoxide Alarm**  
One on every level and in every bedroom
- Fire Extinguisher**  
One on every level, plus kitchen and garage

- When installing on the wall, the top edge of Smoke Alarms should be placed between 4 inches (102 mm) and 12 inches (305 mm) from the wall/ceiling line.
- When installing on the ceiling, place the Alarm as close to the center as possible.
- In other case, install at least 4 inches (102 mm) from where the wall and ceiling meet. See "Avoiding Dead Air Spaces" for more information.

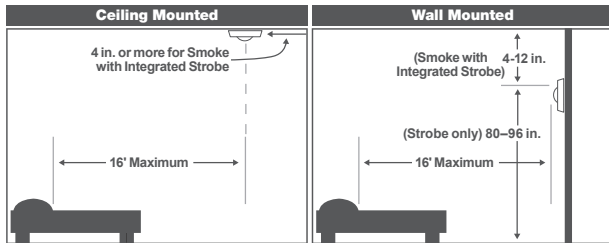
**NOTE:** For any location, make sure no door or other obstruction could keep wall carbon monoxide or smoke from reaching the Alarm.

### FOR HEARING IMPAIRED SMOKE ALARMS WITH INTEGRATED STROBE LIGHT

Smoke Alarms with Integrated Strobe lights intended for the hearing impaired should be located in the bedroom where a hearing impaired person sleeps. Additional Alarms should be located in any room where a hearing impaired person may be present and need to be notified of a smoke danger.

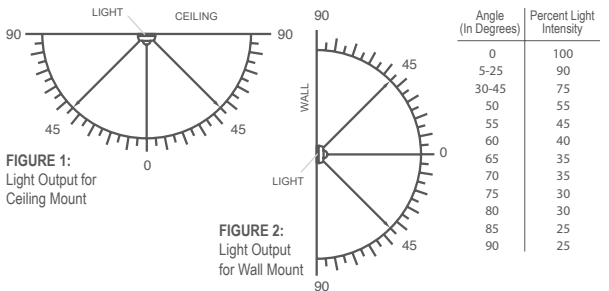
According to NFPA 72, for wall mounting, a 177 candlea strobe light must be used in a sleeping area when mounting height of lens is less than 24 inches (61 cm) from the ceiling. A Smoke Alarm with an integrated Strobe light must be placed in accordance with the Smoke Alarm placement recommendations.

For Wall Mounting the Alarm should be between 4 inches (100 mm) and 12 inches (300 mm) from ceiling to avoid the "dead air" spaces. For Ceiling Mounting the Alarm should be placed at least 4 inches (100 mm) from wall or corner (see "Where Not To Locate This Alarm" below). In addition, for wall or ceiling mounting, the unit must be located within 16 linear feet (4.8 meters) from top of lens to the pillow (see diagram below).



### STROBE LIGHT OUTPUT FOR WALL & CEILING MOUNTING

The intensity of the strobe light gradually lessens as the angle increases. In other words, the light is brightest directly in front of the strobe light and is progressively less bright to either side. The following illustrations show how the strobe light is dispersed. Use them to help you choose where to locate units for the hearing impaired.



### PHOTOSENSITIVE EPILEPSY AND STROBE FLASH RATES

Individuals who are susceptible to photosensitive epilepsy might have an increased probability for seizures with multiple strobe lights flashing asynchronously. The frequency or speed of flashing light is most likely to cause seizures varies from person to person. Generally, flashing lights most likely to trigger seizures are between the frequencies of 5 to 30 flashes per second (Hertz). This strobe light flashes at about 1 flash per second.

### WHERE NOT TO INSTALL THIS ALARM

FOR BEST PERFORMANCE, IT IS RECOMMENDED YOU AVOID INSTALLING SMOKE ALARMS IN THESE AREAS:

- In garages, furnace rooms, crawl spaces and unfinished attics. Avoid extremely dusty, dirty or greasy areas.
- Where combustion particles are produced. Combustion particles form when something burns. Areas to avoid include poorly ventilated kitchens, garages, and furnace rooms. Keep units at least 20 feet (6 meters) from the sources of combustion particles (stove, furnace, water heater, space heater) if possible. In areas where a 20-foot (6 meter) distance is not possible – in modular, mobile, or smaller homes, for example – it is recommended the Smoke Alarm be placed as far from these fuel-burning sources as possible. The placement recommendations are intended to keep these Alarms at a reasonable distance from a fuel-burning source, and thus reduce "unwanted" Alarms. Unwanted Alarms can occur if a Smoke Alarm is placed directly next to a fuel-burning source. Ventilate these areas as much as possible.
- Within 5 feet (1.5 meters) of any cooking appliance. In air streams near kitchens. Air currents can draw cooking smoke into the smoke sensor and cause unwanted Alarms.
- In extremely humid areas. This Alarm should be at least 10 feet (3 meters) from a shower, sauna, humidifier, vaporizer, dishwasher, laundry room, utility room, or other source of high humidity.
- In direct sunlight.
- In turbulent air, like near ceiling fans or open windows. Blowing air may prevent CO or smoke from reaching the sensors.
- In areas with temperatures above 40° F (4.4° C) or hotter than 100° F (37.8° C). These areas include non-airconditioned crawl spaces, unfinished attics, uninsulated or poorly insulated ceilings, porches, and garages.
- In insect infested areas. Insects can drag the openings to the sensing chamber.
- Less than 12 inches (305 mm) away from fluorescent lights. Electrical "noise" can interfere with the sensor.
- In "dead air" spaces.

### AVOIDING DEAD AIR SPACES

"Dead air" spaces may prevent smoke from reaching the Smoke Alarm. To avoid dead air spaces, follow installation recommendations below.

On ceilings, install Smoke Alarms as close to the center of the ceiling as possible. If this is not possible, install the Alarm at least 4 inches (102 mm) from the wall or corner.

For wall mounting (if allowed by building codes), the top edge of Smoke Alarms should be placed between 4 inches (102 mm) and 12 inches (305 mm) from the wall/ceiling line, below typical "dead air" spaces.

On a peaked, gabled, or cathedral ceiling, install first Smoke/CO Alarm within 3 feet (0.9 meters) of the peak of the ceiling, measured horizontally. Additional Smoke/CO Alarms may be required depending on the length, angle, etc. of the ceiling's slope. Refer to NFPA 72 for details on requirements for sloped or peaked ceilings.

### HOW TO INSTALL THIS ALARM

This Smoke/CO Alarm is designed to be mounted on any standard wiring junction box up to a 4-inch (10 cm) size, on either the ceiling or wall (if allowed by local codes). Read "Where to Install This Alarm" and "Where This Alarm Should Not Be Installed" before you begin installation.

Tools you will need: Standard flathead screwdriver • Wire strippers

**! WARNING!** Make sure the Alarm is not receiving excessively noisy power. Examples of noisy power could be major appliances on the same circuit, power from a generator or solar power, light dimmer on the same circuit or mounted near fluorescent lighting. Excessively noisy power may cause damage to your Alarm.

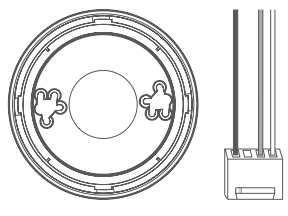
### PARTS OF THIS ALARM

**The Mounting Bracket:** To remove the mounting bracket from the Alarm base, hold the Alarm base firmly and twist the mounting bracket counterclockwise. The mounting bracket installs onto the junction box. It has a variety of screw slots to fit most boxes.

**The Power Connector:** The power connector plugs into a power input block on the Alarm. It supplies the unit with AC power.

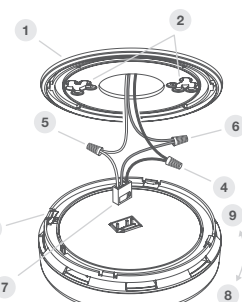
- The black wire is "hot."
- The white wire is neutral.
- The orange wire is used for interconnect.

If you need to remove the power connector, turn **POWER OFF** first. Insert a flat screwdriver behind the power connector and the security tab inside the power input block. Gently pry back the tab and pull the connector free.



### THE PARTS OF THIS SMOKE ALARM

- Mounting Bracket
- Mounting Slots
- Disable Switch
- Hot (Black) AC Wire
- Neutral (White) AC Wire
- Interconnect (Orange) Wire
- Quick-Connect Power Connector
- Turn this way to remove from bracket
- Turn this way to attach to bracket

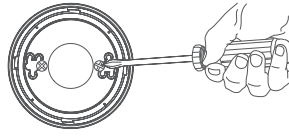


### FOLLOW THESE SIMPLE STEPS

The basic installation of this Smoke Alarm is similar whether you want to install one Alarm, or interconnect more than one Alarm. If you are interconnecting more than one Alarm, you **MUST** read "Special Requirements For Interconnected Alarms" below before you begin installation.

**! DANGER!** ELECTRICAL SHOCK HAZARD. Turn off power to the area where you will install this unit at the circuit breaker or fuse box before beginning installation. Failure to turn off the power before installation may result in serious electrical shock, injury or death.

- Attach the mounting bracket to the junction box.
- Using wire nuts, connect the power connector to the household wiring.



### STAND-ALONE ALARM ONLY:

- Connect the white wire to the power connector to the neutral wire in the junction box.
- Connect the black wire on the power connector to the hot wire in the junction box.
- Tuck the orange wire inside the junction box. It is used for interconnect only.

### INTERCONNECTED UNITS ONLY:

Strip off about 1/2" (12 mm) of the plastic coating on the orange wire on the power connector.

- Connect the white wire on the power connector to the neutral wire in the junction box.
- Connect the black wire on the power connector to the hot wire in the junction box.
- Connect the orange wire on the power connector to the interconnect wire in the junction box. Repeat for each unit you are interconnecting. Never connect the hot or neutral wires in the junction box to the orange interconnect wire. Never cross hot and neutral wires between Alarms.

- Plug the power connector into the back of the Alarm.

- Position the base of the Alarm over the mounting bracket, and turn the Alarm clockwise (right) firmly until the unit is in place and the activation chip is heard. If wall mounted, adjust unit so words are level. The battery backup will activate when you mount the Alarm.

- Check all connections.

**! WARNING!** Improper wiring of the power connector or the wiring leading to the power connector will cause damage to the Alarm and may lead to a non-functioning Alarm.

### STAND-ALONE ALARM ONLY:

- If you are only installing one Alarm, restore power to the junction box.

### INTERCONNECTED UNITS ONLY:

- If you are interconnecting multiple Alarms, repeat steps 1-5 for each Alarm in the series. When you are finished, restore power to the junction box.

### ! DANGER!

ELECTRICAL SHOCK HAZARD. Do not restore power until all Alarms are completely installed. Restoring power before installation is complete may result in serious electrical shock, injury or death.

- Turn AC power back on. Under normal operation, the Green power indicator light will shine continuously.

- If the Green power indicator light does not light, **TURN OFF POWER TO THE JUNCTION BOX** and recheck all connections. If all connections are correct and the Green power indicator still does not light when you restore the power, the unit should be replaced immediately.

- Test each Alarm. Press and hold the Test/Silence button until the unit Alarms. When testing a series of interconnected units you must test each unit individually. Make sure all units Alarm when each one is tested.

**! DANGER!** If any unit in the series does not Alarm, **TURN OFF POWER** and recheck connections. If it does not Alarm when you restore power, replace it immediately.

### SPECIAL REQUIREMENTS FOR INTERCONNECTED ALARMS

- ! WARNING!** Failure to meet any of the above requirements could damage the units and cause them to malfunction, removing your protection.
- AC and AC/DC Alarms can be interconnected. Under AC power, all units will Alarm when one senses smoke or CO. When power is interrupted, only the AC/DC units in the series will continue to send and receive signals. AC powered Alarms will not operate.**

Interconnected units can provide earlier warning of fire than stand-alone units, especially if a fire starts in a remote area of the dwelling. If any unit in the series senses smoke, all units will Alarm. To determine which Alarm initiated an Alarm, see table:

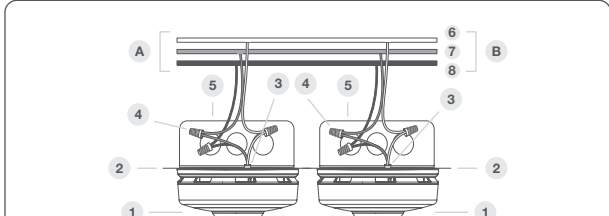
	On Initiating Alarm(s): Red LED(s) flashes (flashes) rapidly
During an Alarm	On All Other Alarms: Green LED(s) Off, Red LED(s) Off
	On Initiating Alarm(s): Red LED(s) On for 2 seconds/ Off for 2 seconds
After an Alarm (Latching)	On All Other Alarms: Green LED(s) Normal, Red LED(s) Off

### COMPATIBLE INTERCONNECTED UNITS

**IMPORTANT!** Interconnected units within a single family residence only. Otherwise all households will experience unwanted Alarms when you test any unit in the series. Interconnected units will only work if they are wired to compatible units and all requirements are met. This unit is designed to be compatible with: First Alert and BRK Smoke Alarm Models 7010, 9120, 9120B, 7010A, 7010B, 7010SL, 7010BSLA, 7020B, 7020BSL, 9120B, SAS20, SC710B, SC710BA, SC710B0, SC9120B, SC9120BLA, 9120BLA, SA3210A, SC9120BA, SC9120A, SM100V-AC, SM300-AC, and SM110LED-AC. First Alert and BRK Smoke & CO Alarm Models 1039102, 7030BSL, SMC0100V-AC, SMC0110LED-AC, First Alert and BRK CO Alarm Models C05120B, C05120A and C05120PDBN. First Alert and BRK Heat Alarm Model HD5135FB, HD6135FBA, RM4 Relay, SLED117 and SLED117TA Strobe when connected via an RM4 Relay.

### INTERCONNECTED UNITS MUST MEET ALL OF THE FOLLOWING REQUIREMENTS:

- A maximum of 18 compatible units may be interconnected (Maximum of 12 Smoke Alarms).
- The same fuse or circuit breaker must power all interconnected units.
- The total length of wire interconnecting the units should be less than 1000 feet (300 meters). This type of wire is commonly available at Hardware and Electrical Supply stores.
- All wiring must conform to all local electrical codes and NFPA 70 (NEC). Refer to NFPA 72, NFPA 101, and/or your local building code for further connection requirements.



A	Unswitched 120VAC 60 Hz source	B	To additional units; Maximum = 18 total (Maximum 12 Smoke Alarms)
1	Alarm	4	Wire Nut
2	Ceiling or Wall	5	Junction Box
3	Power Connector	6	Neutral Wire (White)
		7	Interconnect Wire (Orange)
		8	Hot Wire (Black)

### "SMART INTERCONNECT" FEATURE

This Alarm includes "Smart Interconnect" which enables the Alarm to be interconnected with other First Alert® and BRK smoke, heat and "Smart Interconnect" CO Alarms. When smoke is detected, all Alarms will sound horn pattern. When CO is detected, "Smart Interconnect" feature will remain silent during a CO Alarm.

### WHAT YOU WILL SEE AND HEAR WITH THIS ALARM

Normal State Signal	Horn: Silent; LED: Constant GREEN; Strobe: Off
On Battery Backup Signal	Horn: Silent; LED: Flashing GREEN 1x every minute; Strobe: Disabled
Smoke Signal* (Initiating Alarm)	Horn: 3 beeps, pause, repeating; LED: Flashes RED in sync with horn; Strobe: Flashes approximately every second
Alarm Test Smoke Signal	Horn: 3 beeps, pause, repeats 1 time; LED: Flashes RED in sync with horn; Strobe: Flashes approximately every second
Malfunction Signal	Horn: 3 "Chirps" every minute; LED: Flashes GREEN in sync with horn; Strobe: Off
Low Battery Signal	Horn: 5 "chirps" every minute; LED: Flashes GREEN 1 time every minute; Strobe: Off
End of Life Signal	Horn: 5 "chirps" every minute; LED: Flashes GREEN in sync with horn; Strobe: Off
Smoke Alarm (Receiving) Signal (Interconnect Devices)	Horn: 3 beeps, pause, repeating; LED: Off; Strobe: Flashes approximately every second
Smoke Silence Signal	Horn: Silent (for approximately 9 minutes); LED: Flashes RED 3 times, pause, repeating; Strobe: Off
End of Life Silence Signal	Horn: Silent for 8 hours; LED: Constant GREEN then flashes 5 times every minute
Alarm Latch Signal**	Horn: Off; LED: Flashes RED 2 seconds on/ 2 seconds off; Strobe: Off

\*NOTE: The strobe light will not operate under battery power.

\*\*NOTE: Latching feature will not operate under battery power.

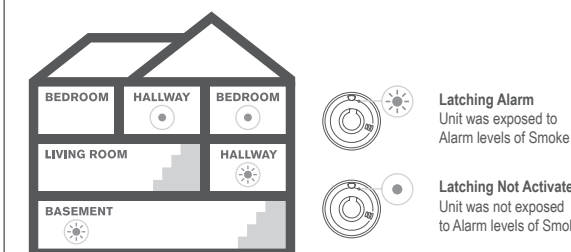
## 04 ALARM FEATURES

- Smoke Alarm and Strobe Light:** Requires only one electrical box for 2 vital functions. Saves installation time and costs. One device includes strobe light and photoelectric Smoke Alarm.
- Low Profile Design:** Half the size of a standard Alarm.
- Quick Connect Plug:** Allows for easy installation. No need to wire.

### LATCHING FEATURE

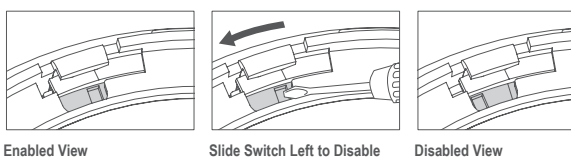
Alarm Latch is activated after an Alarm is exposed to Alarm levels of smoke. This feature will only work with AC power. See "Special Requirements for Interconnected Alarms" for signaling. This feature helps emergency responders, investigators, or service technicians identify which unit(s) in your home were exposed to Alarm levels of smoke. This can help investigators pinpoint the source of smoke.

Interconnected Alarms. Latching Alarm Indicator shows which Alarm(s) in the series were exposed to Alarm levels of smoke. The Latching Alarm Indicator stays ON until you clear it, so it can alert you to an Alarm that occurred while you were away from home, even though smoke present in the air has dropped below Alarm levels.



### TO PERMANENTLY DISABLE THE SMOKE ALARM

After 10 years of operation or low battery warning, permanently disable the alarm by following the diagram below. Insert tool into slot in red disable switch. Slide switch fully to the left.



**NOTE:** At end of life or low battery indication (chirp): unit must be put into disabled mode to discharge remaining stored energy in battery. Unit will no longer function once put into this mode. Unit will reset re-mounting and will chirp every 2 seconds until plug is disconnected from AC power source. Once disabled, replace Alarm immediately.

## 05 TESTING & MAINTENANCE

### WEEKLY TESTING

- ! WARNING!** NEVER use an open flame of any kind to test this unit. You might accidentally damage or set fire to the unit or to your home.
- If the Alarm ever fails to test properly, replace it immediately. Products under warranty may be returned to the manufacturer for replacement. See "Limited Warranty" for details.
- DO NOT** stand close to the Alarm when the horn is sounding. Exposure at close range may be harmful to your hearing. When testing, step away when horn starts sounding.

**! CAUTION!** It is important to test this unit every week to make sure it is working properly. Using the Test/Silence button is the recommended way to test this Smoke Alarm.

Press and hold the Test/Silence button on the cover of the unit until the Alarm sounds (the unit may continue to Alarm for a few seconds after you release the button). If it does not Alarm, make sure the unit is receiving power and test it again. If it still does not Alarm, replace it immediately.

During testing, you will hear a loud, 3 beeps, pause, 3 beeps and the strobe light will begin flashing. When testing a series of interconnected units you must test each unit individually. Make sure all units Alarm when each one is tested.

**NOTE:** If you have interconnected this Alarm with a BRK Carbon Monoxide Alarm, when you test that Alarm you will hear a loud continuous beeping sound and the strobe light will flash constant approximately 1 flash per second. Then you will hear a loud repeating horn pattern from this Alarm. 4 rapid beeps, pause, 4 rapid beeps, pause. In addition, the strobe light will flash approximately 1 flash per second for four flashes, then 3 seconds off. The pattern is repeated.

If you have interconnected this Alarm with a BRK combination Smoke & Carbon Monoxide Alarm, when you test that Alarm you will hear a loud continuous beeping sound and the strobe light will flash constant approximately 1 flash per second. Then you will hear a loud repeating horn pattern from this Alarm. 4 rapid beeps, pause, 4 rapid beeps, pause and the strobe light will flash approximately 1 flash per second for four flashes, then 3 seconds off. The pattern is repeated.

### REGULAR MAINTENANCE

This unit has been designed to be as maintenance free as possible, but there are a few simple things you must do to keep it working properly.

- Test it at least once a week.
- Clean the Smoke Alarm at least once a month; gently vacuum off any dust using your household vacuum's soft brush attachment, and test the Smoke Alarm after cleaning. Never use water, cleaners or solvents since they may damage the unit.
- If the Smoke Alarm becomes contaminated by excessive dirt, dust and/or grime, and cannot be cleaned to avoid unwanted Alarms, replace the unit immediately.
- If the green power LED flashes 2 times every minute (horn is silent) it means that the Alarm needs to be cleaned as indicated above. If green light continues to flash, replace Alarm.
- Relocate the unit if it sounds frequent unwanted Alarms. See "Locations to Avoid for Smoke Alarms" for details.
- Protect or cover the alarm when doing any maintenance to home i.e. sanding floors, painting, drywall patching, etc. to prevent contamination.

### IMPORTANT!

Actual service life depends on the Smoke Alarm and the environment in which it is installed. You **MUST** replace the Smoke Alarm immediately once the unit starts "chirping" (the End of Life or Malfunction warning).

### TROUBLESHOOTING GUIDE

**! DANGER!** ELECTRICAL SHOCK HAZARD. Turn off the power to the area where the Alarm is installed BEFORE removing it from the mounting bracket or checking any electrical connections! Failure to turn off the power first may result in electrical shock, injury or death.

IF THE ALARM...	PROBLEM...	YOU SHOULD...
Green Power light is off. Unit will not Alarm when you press the Test/Silence button	Unit may not be receiving any power.	Check the AC power supply. Make sure the power connector is securely attached to the Alarm.
Green Power light flashes ON every minute (horn is silent)	Alarm is not receiving AC power.	Unit is operating on battery backup. Check the AC power supply.
Horn "chirps" 3 times every minute and LED flashes in sync with horn	<b>MALFUNCTION SIGNAL.</b> Device is not working properly, and needs to be replaced.	If unit is under warranty, contact Consumer Support to process a warranty replacement.
Horn "chirps" 5 times every minute and LED flashes 1 time every minute	Battery is low or missing.	Replace Alarm immediately.
Alarm goes back into Alarm after you press the Test/Silence button to silence the Alarm	Smoke levels are still potentially dangerous	Refer to "If This Smoke Alarm Sounds" for details on how to respond to an Alarm. EVACUATE your home immediately and call 911.
Smoke Alarm sounds when no smoke is visible	Unwanted Alarm may be caused by nonemergency sources like cooking smoke.	Silence Alarm using Test/ Silence button; clean the Alarm's cover with a soft, clean cloth. If frequent unwanted Alarms continue, relocate your Alarm. Alarm may be too close to a kitchen, cooking appliance, or steamy bathroom.
Power LED flashes Green 2 times every minute	Alarm requires cleaning.	Clean Alarm then press and release the test button. See Regular Maintenance section. If Green LED Continues to flash, contact Consumer Support.
Power LED Flashes Green every 2 seconds, followed by 5 chirps per minute.	Unit may not be activated	Make sure the power connector is securely attached to the Alarm. Position the base of the Alarm over the mounting bracket, and firmly turn the Alarm clockwise (right) until unit activation chirp is heard.

If you have questions that cannot be answered by reading this manual, call the Customer Service Team at 1-800-323-9005.

### FIRE SAFETY TIPS

- Use smoking materials properly. Never smoke in bed.
- Keep matches or lighters away from children.
- Store flammable materials in proper containers.
- Keep electrical appliances in good condition and don't overload electrical circuits.
- Keep stoves, barbecue grills, fireplaces and chimneys grease- and debris-free.
- Never leave anything cooking on the stove unattended.
- Keep portable heaters and open flames, like candles, away from flammable materials.
- Don't let rubbish accumulate. Keep Alarms clean, and test them weekly. Replace Alarms immediately if they are not working properly. Smoke Alarms that do not work cannot alert you to a fire. Keep at least one working fire extinguisher on every level, and an additional one in the kitchen. Have fire escape ladders or other reliable means of escape from an upper level in case stairs are blocked.
- Have an escape plan and practice it regularly.

## 06 IF THIS SMOKE & STROBE LIGHT ALARM SOUNDS

### RESPONDING TO AN ALARM

During a smoke incident at this Alarm, you will hear 3 beeps, pause, 3 beeps and the strobe light will flash constant approximately 1 flash per second.

### ! WARNING!

- If the unit Alarms get everywhere out of the house immediately.
- If the unit Alarms and you are not testing the unit, it is warning you of a potentially dangerous situation that requires your immediate attention. NEVER ignore any Alarm. Ignoring the Alarm may result in injury or death.
- Never remove the batteries from a battery operated Smoke Alarm to stop an unwanted Alarm (caused by cooking smoke, etc.). Removing batteries disables the Alarm so it cannot sense smoke, and removes your protection. Instead open a window or fan the smoke away from the unit. The Alarm will reset automatically.

### WHAT TO DO IN CASE OF FIRE

- Don't panic; stay calm. Follow your family escape plan.
- Get out of the house as quickly as possible. Don't stop to get dressed or collect anything.
- Feel doors with the back of your hand before opening them. If a door is cool, open it slowly. Don't open a hot door. Keep doors and windows closed, unless you must escape through them.
- Cover your nose and mouth with a cloth (preferably damp). Take short, shallow breaths.
- Meet at your planned meeting place outside your home, and do a head count to make sure everybody got out safely.
- Call the Fire Department as soon as possible from outside. Give your address, then your name.
- Never go back inside a burning building for any reason.
- Contact your Fire Department for ideas on making your home safer.

**! WARNING!** Alarms have various limitations. See "General Limitations of Smoke Alarms" for details.

## 07 USING THE SILENCE FEATURES

The Silence Feature can temporarily quiet an unwanted Alarm for up to 9 minutes. To use this feature, press the Test/Silence button on the cover. If the unit will not silence and no heavy smoke is present, or if it stays in silence mode continuously, it should be replaced immediately. The LED will flash repeatedly 3 flashes, pause, white in silence.

### ! WARNING!

The Silence Feature does not disable the unit—it makes it temporarily less sensitive to smoke. For your safety, if smoke around the unit is dense enough to suggest a potentially dangerous situation, the unit will stay in Alarm or may re-Alarm quickly. If you do not know the source of the smoke, do not assume it is an unwanted Alarm. Not responding to an Alarm can result in property loss, injury, or death.

### SILENCING THE END OF LIFE WARNING

This Silence Feature can temporarily quiet the end of life warning "chirp" for up to 8 hours. Press the Test/Silence button on the Alarm cover until you hear the acknowledgement "chirp".

Once the end of life warning "chirp" Silence Feature is activated, the unit continues to flash the green light 5 times every minute for 8 hours. After 8 hours, the end of life "chirp" will resume. Replace the unit as soon as possible, to maintain protection in event of a power outage.

### IF YOU SUSPECT A PROBLEM

- Smoke Alarms may not operate properly because of a dead or weak battery, a build-up of dirt, dust or grease on the Smoke Alarm cover, or installation in an improper location. Clean the Smoke Alarm as described in "Regular Maintenance," and then test the Smoke Alarm again. If it fails to test properly when you use the test button, or if the problem persists, replace the Smoke Alarm immediately.
- If you hear 3 or 5 chirps every minute or so, replace the Smoke Alarm.
- If you experience frequent non-emergency Alarms (like those caused by cooking smoke), try relocating the Smoke Alarm.
- If the Alarm sounds when no smoke is visible, try cleaning or relocating the Smoke Alarm. The cover may be dirty.
- If the Alarm does not sound during testing, make sure it is receiving AC power from the household circuit.

## 11 GENERAL LIMITATIONS OF SMOKE ALARMS

Smoke Alarms have played a key role in reducing deaths resulting from home fires worldwide. However, like any warning device, Smoke Alarms can only work if they are properly located, installed, and maintained, and if smoke reaches them. They are not foolproof.

**Smoke Alarms may not waken all individuals.** Practice the escape plan at least twice a year, making sure that everyone is involved – from kids to grandparents. Allow children to master fire escape planning and practice before holding a fire drill at night when they are sleeping. If children or others do not readily waken to the sound of the Smoke Alarm, or if there are infants or family members with mobility limitations, make sure that someone is assigned to assist them in fire drill and in the event of an emergency. It is recommended that you hold a fire drill while family members are sleeping in order to determine their response to the sound of the Smoke Alarm while sleeping and to determine whether they may need assistance in the event of an emergency.

**Smoke alarm may not be effective.** In fires where the victim is intimate with a flaming initiated fire; for example, when a person's clothes catch fire while cooking, fires where the smoke is prevented from reaching the smoke alarm due to a closed door or other obstruction, or incendiary fires where the fire grows so rapidly that an occupant's egress is blocked even with properly located smoke alarms.

**Smoke Alarms cannot work without power.** Battery operated units cannot work if the batteries are missing, disconnected or dead, if the wrong type of batteries are used, or if the batteries are not installed correctly. AC units cannot work if the AC power is out for any reason (open fuse or circuit breaker, failure along a power line or at a power station, electrical fire that burns the electrical wires, etc.). If you are concerned about the limitations of battery or AC power, install both types of units.

**Smoke Alarms cannot detect fires if the smoke does not reach the Alarms.** Smoke from fires in chimneys or walls, on roofs, or on the other side of closed doors may not reach the sensing chamber and set off the Alarm. That is why one unit should be installed inside each bedroom or sleeping area—especially if bedroom or sleeping area doors are closed at night—and in the hallway between them.

**Smoke Alarms may not detect fire on another level or area of the home.** For example, a stand-alone unit on the second level may not detect smoke from a basement fire until the fire spreads. This may not give you enough time to escape safely. That is why recommended minimum protection is at least one unit in every sleeping area, and every bedroom on every level of your home. Even with a unit on every level, stand-alone units may not provide as much protection as interconnected units, especially if the fire starts in a remote area. Some safety experts recommend installing interconnected AC powered units with battery back-up (see "About Smoke Alarms") or professional fire detection systems, so if one unit senses smoke, all units Alarm. Interconnected units may provide earlier warning than stand-alone units since all units Alarm when one detects smoke.

**Smoke Alarms may not be heard.** Though the Alarm horn in this unit meets or exceeds current standards, it may not be heard if: 1) the unit is located outside a closed or partially closed door, 2) residents recently consumed alcohol or drugs, 3) the Alarm is drowned out by noise from stereo, TV, traffic, air conditioner or other appliances, 4) residents are hearing impaired or sound sleepers. Special purpose units, like those with visual and audible Alarms, should be installed for hearing impaired residents.

**The Alarm may not have time to Alarm before the fire itself causes damage, injury, or death,** since smoke from some fires may not reach the unit immediately. Examples of this include persons smoking in bed, children playing with matches, when a person's clothing catches fire while cooking, fires caused by violent explosions resulting from escaping gas, or incendiary fires where the fire grows so rapidly that an occupant's egress is blocked even with properly located Smoke Alarms.

**Smoke Alarms are not foolproof.** Like any electronic device, Smoke Alarms are made of components that can wear out or fail at any time. You must test the unit weekly to ensure your continued protection. Smoke Alarms cannot prevent or extinguish fires. They are not a substitute for property or life insurance.

**Smoke Alarms have a limited life.** The unit should be replaced immediately if it is not operating properly. You should always replace a Smoke Alarm after 10 years from date of purchase. Write the purchase date on the space provided on back of unit.

## 12 LIMITED WARRANTY

First Alert® warrants that for a period of ten years from the date of purchase, this product will be free from defects in material and workmanship. First Alert, at its option, will repair or replace this product or any component of the product found to be defective during the warranty period. Replacement will be made with a new or remanufactured product or component. If the product is no longer available, replacement may be made with a similar product of equal or greater value. This is your exclusive warranty.

This warranty is valid for the original retail purchaser from the date of initial retail purchase and is not transferable. Keep the original sales receipt. Proof of purchase is required to obtain warranty performance. First Alert dealers, service centers, or retail stores selling First Alert products do not have the right to alter, modify or any way change the terms and conditions of this warranty.

This warranty does not cover normal wear of parts or damage resulting from any of the following: negligent use or misuse of the product, use on improper voltage or current, use contrary to the operating instructions, disassembly, repair or alteration by anyone other than First Alert or an authorized service center. Further, the warranty does not cover Acts of God, such as fire, flood, hurricanes and tornadoes.

First Alert shall not be liable for any incidental or consequential damages caused by the breach of any express or implied warranty. Except to the extent prohibited by applicable law, any implied warranty of merchantability or fitness for a particular purpose is limited in duration to the duration of the above warranty. Some states, provinces or jurisdictions do not allow the exclusion or limitation of incidental or consequential damages or limitations on how long an implied warranty lasts, so the above limitations or exclusion may not apply to you. This warranty gives you specific legal rights, and you may also have other rights that vary from state to state or province to province.

### HOW TO OBTAIN WARRANTY SERVICE

**Service:** If service is required, do not return the product to your retailer. In order to obtain warranty service, contact the Customer Service Team at 1-800-323-9005. To assist us in serving you, please have the model number and date of purchase available when calling.

**Battery:** First Alert makes no warranty, express or implied, written or oral, including that of merchantability or fitness for any particular purpose with respect to battery.

**Disposal:** Please follow local guidelines regarding the disposal or recycling of batteries and/or electronics.

<b>For your records, please record:</b>
<b>Date Purchased:</b> _____
<b>Where Purchased:</b> _____
<b>Date Installed:</b> _____ / _____ <b>Month</b> / <b>Year</b>
<b>Replace Alarm 10 years after installation.</b>
<b>Please write the date in the space provided:</b> _____ / _____ <b>Month</b> / <b>Year</b>

The Alarm will also provide an audible End-of-Life Signal approximately 10 years after installation to remind you to replace the unit.

The End-of-Life Signal can be silenced for up to 8 hours. Do not unplug or deactivate the Alarm until you get replacement.

M08-0650-000 09/25 Rev 03

**CONFORMS TO CAN/ULC STD 531 & ULC STD S526**

**Certified to CANULC STD 531 & ULC STD S526**

120 VAC ~ 60Hz, 0.8A

firstalert.ca



© 2025 Resideo Technologies, Inc. All rights reserved. These products are manufactured by Resideo Technologies, Inc. and its affiliates. 3901 Liberty Street, Aurora, IL 60504-8122. Customer Service Team: (800) 323-9005 | firstalert.ca